

Residential Finished Basement Specifications

CHARTER TOWNSHIP OF CANTON
DEPARTMENT OF MUNICIPAL SERVICES
BUILDING AND INSPECTION SERVICES DIVISION
1150 Canton Center Road, Canton, MI 48188 • 734/394-5200

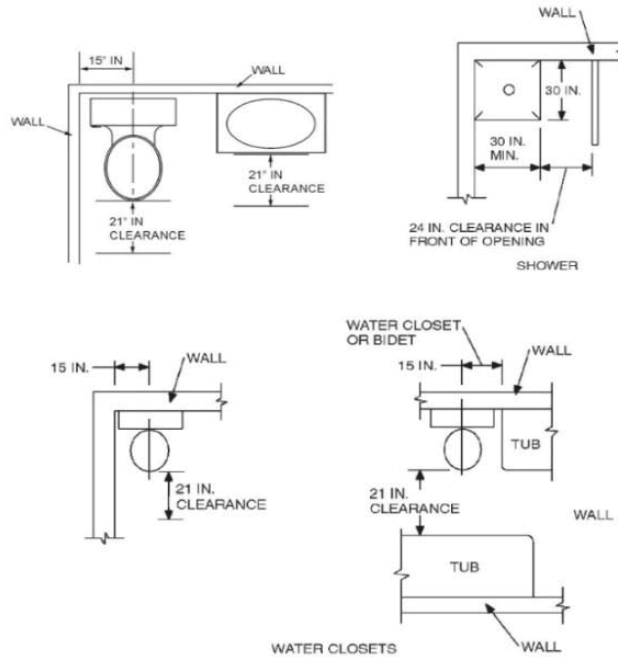
1. Door sizes. (Min. 24" wide , 6'-6" high, R311.2.1) Min. hallway width 36".
2. Comply with required bathroom dimensions, fixture distances from walls, tubs and cabinetry to comply with Fig. R307.1
3. The dimension to the bottom of existing ductwork and beams must be no less than. 6'-4".
4. A minimum 7 ft. ceiling height in **new homes** and 6'-8" in **existing homes is required.**
5. **All** basements and every sleeping room shall have at least one operable emergency and escape rescue opening. (R310.1)
 - a. **Basements finished without permits must comply with the current code.(See #11)**
 - b. Min. window dimensions: 24" clear height, 20" clear width (casements open at 90 degrees) and 5.7 s.f. total area (R310.2.1) Doors used to gain access to an egress window must not have any locking hardware.
6. Smoke detectors and carbon monoxide alarms are required in bedrooms and vicinity. (R314 & R315)
7. Ground fault circuit interrupters required in laundry areas and within 6 feet of a tub/shower and outlets. (E3902.8 & E3902.9)
8. Drywall is required under the stairs if enclosed and accessible. (R302.7)
9. Partitions must be min. 2x4 framing with a max. 24" on center spacing and treated bottom plates. (R317.1) Fire stopping is required at top of concealed wall spaces (R602.8)
- 10.R-11 Insulation is required along exterior foundation walls. Vapor barriers are prohibited.
- 11.**Finished basements completed without a permit will be inspected for mandatory safety items (egress, fire blocking, electrical, etc.) Other correction items are at the discretion of the inspector based on visual inspection.**

Finished Basement Order of Inspections:

1. Rough electrical
2. Rough mechanical
3. Rough plumbing
4. Rough building (including ceiling if applicable)
5. Insulation
6. Final Electrical/Mechanical/Plumbing/Building



Bathroom fixtures spacing requirements



Egress Window Requirements

